

Summer Gathering 2024 to 2025

General Information

This year's Summer Gathering theme is ***“Meeting in The Middle”***

Haere Mai to this year's Summer Gathering in Waikanae on the Kapiti Coast, Wellington Monthly meeting welcomes you.

This sheet gives information about Summer Gathering and assists you to complete the registration form. The Guide to Registration is more directly focused on explanation of the form. **Please read both this and the Guide to Registration before registering. Consult the Guide as you work through the form.**

Dates for Summer Gathering

Friday 27th December 2024 with access from 3pm when registration opens. **Please be ready, seated in The Elm Hall at 5.15pm for Mihi Whakatau from Mana Whenua.** The evening meal follows this.

Summer Gathering finishes on Thursday 2nd January 2025 with the last meal being breakfast. Rooms are to be vacated and cleaned by 10am on the 2nd, leaving the campsite by midday.

Place

El Rancho
58 Weggery Drive, Waikanae Beach, Kapiti Coast
<https://www.elrancho.co.nz/>

Summer Gathering Planning group **contact:** sglocalplanning@ym.quakers.nz

What happens at Summer Gathering?

Theme

Our theme of “Meeting in the Middle” is both a reflection of having a venue in the middle of Aotearoa and of connecting young with old. It is also an invitation to explore how we, as Quakers, be effective in our involvement with the deep challenges of our country and world in a way that is consistent with the Quaker value that everyone is of equal worth.

Meeting in the middle points to a way of thinking and acting that reaches across divides, looking for the Light within everyone whilst remaining steadfast in our commitment to challenging injustice. How, for example, do Quakers with our Pākehā heritage, navigate the space between Tangata Tiriti and Tangata Whenua, at a time when that framework is politically challenged?

From the El Rancho website about their relationship with tangata whenua

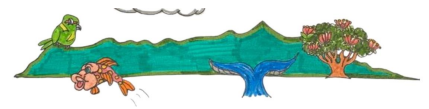
"The gift of land, created by God, gives life.

Land is a blessing.

Since ancient times the land of El Rancho was held within the care of local iwi. Today El Rancho and Takamore Trust/Te Atiawa recognise that we both have important connections to this land.

The land is now designated under the District Plan as Wāhi Tapu.

The land is also a spiritual sanctuary for people to discover, refresh and mature in Jesus Christ. Together, Takamore Trust/Te Atiawa and El Rancho have an on-going relationship as "Kaitiaki - stewards of this land".



Food

Summer Gathering uses The Elm Dining Room. This has a maximum capacity of 120 which limits number to 100 full time Gatherers with an additional maximum 20 day visitors.

All catering is provided and cooked by the *El Rancho* staff who are passionate about providing us with amazing food and an enjoyable experience. Catering is buffet style set up and staff take care of the dishes. Gatherers' duty groups take care of setting out table, serving and clearing up.

All meals are vegetarian. Any **food allergies** are to be notified on the Registration Form.

Special diets which can be catered for are Gluten Free, Dairy Free, Vegan as notified on your Registration Form.

Breakfast	8.00 (negotiated finish time of 8.45 to suit some younger Gatherers.)
Lunch	12:30
Dinner	5:30

Morning, afternoon tea and supper are provided.

There are kitchenettes in each of The Elm Complex accommodation units for those for whom the catered diets are not suitable or are wishing to self-manage and self-cater.

Duties

There are few shared duty groups. Groups will prepare The Elm Dining Room, prepare tables, serve and clean up after each meal. Other duty groups will tidy The Craft space and care for Meeting for Worship. These duties will be rostered.

Those in each unit will clean and tidy their unit.

Roles

During Summer Gathering a *Steering Group* takes care of arrangements and makes ongoing decisions. Much of what happens flows from initiatives by Summer Gatherers.

Home Groups

'Home Groups' include a range of ages. These enable you to come to know some people more closely. JYF's and YF's will find themselves in small home groups which include other JYF's, YF's as well as some all generation Gatherers. Group members work, play and reflect together.

Ako

The morning's programme, (Ako = learning) includes time for home groups, Meeting for Worship (M4W), and choice between three all-age streams of involvement - reflective (talks, ideas, discussion), craft, and activity.

Circles

The afternoons and evenings are more flexible, including circles (formerly interest groups), time offsite, relaxing, special activities, including those activities from El Rancho such as swimming, kayaking, waterslide, wilderness survival. Not to forget concert item planning and rehearsal.

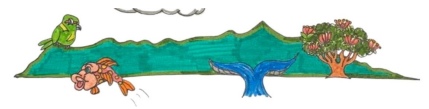
Evening Activities

One evening will host All Age Olympics, on New Year's Eve evening we hold a ceilidh, culminating in a midnight greeting of the New Year. The next day we have camp picnic. The final evening is given to a concert. Bring your skits, music and instruments as you wish.

Accommodation

Most of the rooms are twin, all with a wash basin. Facilities, toilets and showering are shared between 2 or 3 rooms.

There are 6 units in Elm Fireside. Each has 2 rooms with three beds and 2 with two, totalling 10 beds. Other units are the Elm Lodge sleeping 20 and 3 Elm Hall units each sleeping 10, all twin. The [El Rancho website](#) contains room layout diagrams.



Each of the accommodation units has a kitchen and lounge for our use.

The Summer Gathering Organising Committee will allocate beds based on your Registration Form responses.

Six campervan or camping sites are available on a first in first served basis. All are powered.

Cost, including all meals and accommodation

There is no charge for those under 18, and the option of a 50% subsidy for those aged 18 to 25. Subsidy is paid by Yearly Meeting. Please indicate if you wish to have the 50% subsidy in the question, on the Registration form.

Earlybird registered before 28 October	Full time \$590; Per day \$98
Registered before 18 November	Full time \$615; Per day \$103
Registered before 2 December	Full time \$640; Per day \$107

Registrations close on 2 December.

Please register early, as this is a great help for catering and other arrangements.

Following completion of your Registration Form, an automatic email will be sent to the email address recorded in your application. This email will verify your registration and give the cost and details of the bank account it is to be paid into.

Financial support

We would like all Friends and their families wanting to attend Summer Gathering to feel able to do so. As well as the full attendance support for under-18s, and part-support for 18-25s, Yearly Meeting has a Summer Gathering Travel Support Fund. Some Monthly Meetings are also able to assist with the cost of attendance and/or travel. Please feel free to contact the Friends responsible for pastoral and spiritual care in your Monthly Meeting about any form of support

How to get there?

Please arrange to arrive after 3pm on Friday 27th December 2024 to be ready, seated in The Elm Hall at 5.15pm for Mihi Whakatau from Mana Whenua. The evening meal follows this.

Registration opens at 3pm and rooms will be available from this time.

Car

Address: 58 Weggery Drive, Waikanae Beach 5063, plenty of onsite parking available.

Public transport:

Trains and busses run regularly. Please check the *holiday timetable* as this may differ from usual scheduling

<https://www.metlink.org.nz/getting-started/airport-express>

Wellington Station to Waikanae Station:

<https://www.metlink.org.nz/service/KPL/timetable>

Taxis are available from Waikanae to *El Rancho* or you can ask to be picked up.

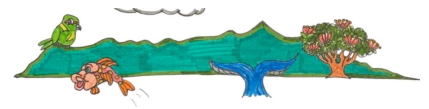
Air

Wellington International Airport

Airport Express Bus available to Wellington train station payment *Snapper or Gold Card, cash or debit card*

We can organise to collect you arriving by train or bus in Waikanae

Please indicate if this is required when completing the Registration Form



What to bring

You will need to bring:

- Your own towel, hand towel and at least one tea towel for each whānau
- Clothing including warm items for cool days
- Rainwear
- Suitable footwear if you go on a walk
- Swimwear
- Toiletries including insect repellent
- Sunhat, sunscreen
- Medications if needed
- RAT tests, masks
- Torch
- Device chargers

Note WIFI available at extra cost

The bedding is provided and has a top and bottom sheets, duvet, pillow and pillow case.

Health care skills

We invite Friends who have health, medical or first aid qualifications to let us know on the form. Details of emergency medical and emergency dental facilities will be available.

Covid and caring for vulnerable Summer Gatherers

Background: The Steering Committee and Covid Response Team at both the Marsden Bay and Tirohanga Summer Gatherings were stressed by having to care for the four people who arrived at camp covid positive.

We will follow public health guidelines at the time of Summer Gathering in response to the level of Covid (or other serious infectious disease.) A Covid response team will take care of ongoing policy during Summer Gathering. You can volunteer for this team.

Anyone who develops an infection is required by El Rancho to leave the site. You can travel home, seek other accommodation, or isolate in Wellington at a location available to us. If this is you, you may need to look after yourself while in isolation e.g. meals. Local supermarkets deliver; takeaway home deliveries are another possibility.

We love having overseas visitors and ask that you arrive in New Zealand at least five days before the camp starts.

We ask that everyone coming to Summer Gathering do a RAT test on the day of arrival. We will have RAT tests available. **We ask that you only come to camp if your RAT test is negative.**

Children and young people

Summer Gathering is for all ages, and most events on the programme are planned to be open to everyone. There may be some activities for specific age groups; apart from these times, parents or regular caregivers are responsible for those aged under 16. If someone under 16 is attending Summer Gathering without a parent or regular caregiver, you need to arrange in advance for a 'proxy parent', i.e. an adult over 18 who will take responsibility for that child / young person as appropriate for their age. There is space on the form to indicate this.

We hope that children and young people will take a full part in the life of Summer Gathering. They are included in home groups, and take part in duties according to their ability.

Respect & safety

Friends at Summer Gathering share the responsibility for one another. Home groups are one of the many ways in which we can keep in touch, enjoy the presence of others, and respond to their gifts and needs. There will be a *Pastoral Care Group* who can be contacted with problems, including a couple of Friends who can respond to experiences of harassment or unwanted approach.