

Young People

Children's Meeting

All children are welcome to stay with their parents in the Meeting Room during meeting for worship, if that suits them. There is also a Children's Meeting for those aged 10 and younger. While we say it starts at 10 am, in reality it is helpful for parents to bring their children to the Annex (which is located in the grounds of the Meeting House), a few minutes prior to 10 am so that parents may come into meeting for worship on time. Children are brought into the Meeting for Worship during the final 10-15 minutes before 'the rise of Meeting' at 11 am. They are then cared for during notices (until about 11:15). Parents are responsible for their own children from that point. Contact person for the Children's Meeting is Sue Stover (stoverwatts@gmail.com).

Young People

All young people are welcome to participate in the Meeting for Worship. In addition, there is a monthly gathering of those aged 10 years or older. Nicknamed the '10 and ups', this group - which also includes parents and other interested adults - meets at 9 am on 3rd Sundays at a local café (currently i-Press Cafe, 421-425 Mount Eden Rd), and then moves by 10 am to the Mt Eden Meeting House for meeting for worship, as well as a time of reflection/discussion. Contact person for 10+ group is Joel Hildebrandt (senorjoel@gmail.com).

National Events

There are gatherings for young people occurring nationally including camps for Junior Young Friends (13-16 year olds) and Young Friends (16 years and up). There are also national family-friendly gatherings including Summer Gathering (which happens over New Years each year), and events at the Whanganui Friends Settlement. For more details about activities for families, children and young people, speak to the 'Elder on duty', contact the Friends Centre 09 630 6834, or email the contact people noted below.

Contact People

Children's Coordinator (Sue Stover)	stoverwatts@gmail.com
Ten and Up Coordinator (Joel Hildebrandt)	senorjoel@gmail.com
Junior Young Friends Coordination Team	jyf@quaker.org.nz
Friends Centre (Resident Friends)	AK.friendscentre@quaker.org.nz

Quakers Support Peace Tax in Aotearoa



AOTEAROA / NEW ZEALAND
32 YEARS NUCLEAR FREE



Welcome to Mt. Eden Meeting for Worship. We meet from 10am - 11am on Sunday mornings (for additional meetings and activities, see overleaf). We gather in silence - open to the leadings of spirit. This may lead to vocal ministry (when someone stands to speak) or it may lead to a silent meeting for worship. Rather than having one Minister or Pastor, Quakers believe that there is that of God in each of us and that in the gathered silence, any of us may feel the call to speak.

From 11-11:15 we have announcements and notices, and this is followed by morning tea and hospitality - please feel welcome to participate. Children's Meeting and Programme for Young People: 10am -11:15 am in the Annex (the building behind this one). For more details, please see overleaf

Calendar of Upcoming Events

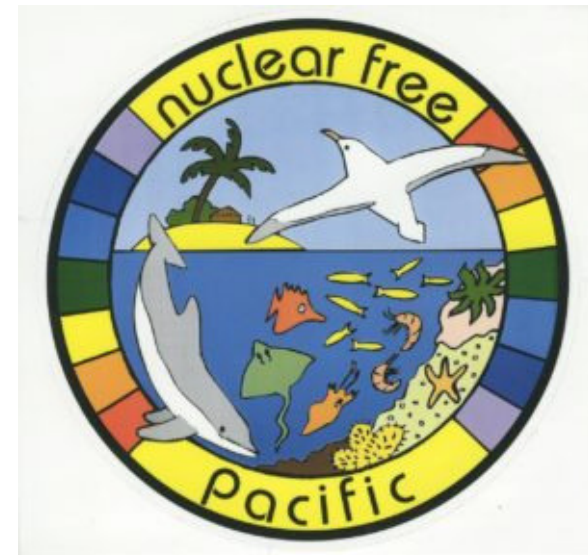
These events occur in Spring of 2019 in addition to the regular events over the page.

- Saturday 7 September 4:30 - 7 pm** **Whanau Gathering at Rosie's house** in the Ōmana Regional Park. Contact Charlotte Gordon for more information
- Sunday 15 September 11:30 am** **Inside Peace** – film viewing followed by discussion and shared lunch. Mt Eden Meeting House
- Friday 20 to Sunday 22 September** **Peace Tax Workshop**
Friends' Settlement Whanganui
- Friday 27 to Sunday 29 September** **Alternatives to Violence – Advanced Workshop**
Friends' Settlement Whanganui
- Sunday 29 September 10am** **Intergenerational Programmed Meeting for Worship**
Mt Eden Meeting House
- Saturday 5 October 4:30 - 7 pm** **Whanau catch-up at Bobbi Woodward's house**
Contact Charlotte Gordon for more information
- Sunday 6 October 11:30 am** **Monthly Meeting for Worship for Business** Mt. Eden Meeting House
- Sunday 20 October 11:30 am** **Christian World Service (CWS) presentation and discussion**, followed by a shared lunch. Mt Eden Meeting House
- Saturday 2 November 4:30 - 7 pm** **Whanau catch-up at Trish and Kevin's house**
Contact Charlotte Gordon for more information
- Saturday 2 November Time TBA** **Monthly Meeting for Worship for Business**
Anglican Care Centre, Whāngārei
- Sunday 24 November 11:30 am** **Rosie and Saskia report back on the Asia West Pacific Conference** held in Hong Kong last year. Followed by shared lunch. Mt Eden Meeting House
- 28 December to 2 January inclusive** **Quaker Summer Gathering 2019-2020**
Wainui Heights on Akaroa Harbour

Q

Regular Events at Mt Eden Meeting

- Every Tuesday, 9:30am** meets at Friends Centre Walking Group followed by morning tea
- Every Wednesday, 10:30am** in Friends Centre Discussion group followed by Meeting for Worship at 11:30am, followed by a shared lunch at 12pm
- Fortnightly Thursday, 7:30pm** in Friends Centre Worship followed by discussion. Alternates weeks with Women's Group
- Fortnightly on Thursday, 7:00pm** in the Annex. Contact Barbara (09) 836 5576 Women's Group
- First Saturday of the Month** (Except long weekends when moves to second Saturday) 5-7pm at the home of a Friend Social event for families and F/friends. Charlotte 0273756143, or charlimaar@gmail.com
- 4th Sundays February to November, 9am** in Friends Centre Prayer Support Group



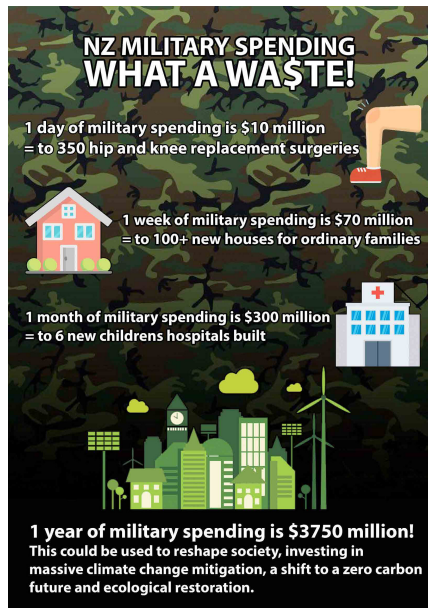
Special Feature

Quakers Support Peace Tax in Aotearoa

Here in Aotearoa New Zealand, as the number of children living in families with an income below the poverty line and the level of homelessness continues to rise, there is a desperate need for more social funding. This year, over 5 Billion NZ\$ have been allocated for military spending in the 2019 'Wellbeing' Budget ... that's an average of \$97,274,730 every week.*

Two years ago, Quaker activist Ian Upton (age 71) led a Hikoī from Cape Reinga to Parliament to try to get Defence Force funding reassigned to purposeful peacemaking and non-violent ends - specifically to child safety education and other welfare work. The government refused and military spending continues to climb.

Perhaps it is time to consider what alternatives there may be to being forced to pay taxes that go towards military spending. NZ Alternative think tank has researched and put forward a proposal for a Conflict Prevention Unit within the New Zealand Government. They will have a representative present at the upcoming Peace Tax workshop at the Quaker Settlement in Wanganui, where participants will consider the history of War and Peace Taxes and focus on how we can work towards establishing a Peace Tax in Aotearoa New Zealand. Quaker and non-Quaker participants will be warmly welcomed.



*Statistics from Peace Movement Aotearoa <http://www.converge.org.nz/pma/gdams.htm>

Special Feature

Quakers Support Peace Tax in Aotearoa

Here in Aotearoa New Zealand, as the number of children living in families with an income below the poverty line and the level of homelessness continues to rise, there is a desperate need for more social funding. This year, over 5 Billion NZ\$ have been allocated for military spending in the 2019 'Wellbeing' Budget ... that's an average of \$97,274,730 every week.*

Two years ago, Quaker activist Ian Upton (age 71) led a Hikoī from Cape Reinga to Parliament to try to get Defence Force funding reassigned to purposeful peacemaking and non-violent ends - specifically to child safety education and other welfare work. The government refused and military spending continues to climb.

Perhaps it is time to consider what alternatives there may be to being forced to pay taxes that go towards military spending. NZ Alternative think tank has researched and put forward a proposal for a Conflict Prevention Unit within the New Zealand Government. They will have a representative present at the upcoming Peace Tax workshop at the Quaker Settlement in Wanganui, where participants will consider the history of War and Peace Taxes and focus on how we can work towards establishing a Peace Tax in Aotearoa New Zealand. Quaker and non-Quaker participants will be warmly welcomed.



*Statistics from Peace Movement Aotearoa <http://www.converge.org.nz/pma/gdams.htm>